

Introducing UATDF and ARTP

June 15, 2023

David Snow, PhD, CLP
President & CEO UATDF
Executive Director – Technology Ventures

Mission Statement

UATDF functions to help build engaged entrepreneurial communities that contribute to a strong economy and quality of life and drive commercialization of innovative research where all are welcome and belong.

UATDF is a Board Governed 501(c)3 that benefits the University of Arkansas

Economic Contributions of US University Non-profit Inventions



University/industry interactions, in the US alone, have generated nearly \$2 trillion in gross economic output, almost \$1 trillion in GDP, & nearly 7 million jobs



Nearly 50% (FIFTY PERCENT) of all US startups based on university IP are still in operation



Over 70% of university startups still in operation are in the same county in which they were founded

Fostering Innovation



In July 2022, AEDC announced that Arkansas outpaced Alabama and Louisiana to become the #1 ranked EPSCoR-eligible jurisdiction in the number of teams participating in the NSF National I-Corps program, rising to #15 from #43 nationwide and surpassing states such as Colorado, Arizona and Virginia.

Participation in NSF EPSCoR laid the groundwork for more than 100 faculty across Arkansas to apply to I-Corps and pursue commercialization. At the time of the announcement, the 40 NSF National I-Corps teams from Arkansas produced 22 startup companies, participated in more than 4,000 industry engagement meetings, created 74 new jobs, and secured an additional \$5.1 million in capital.

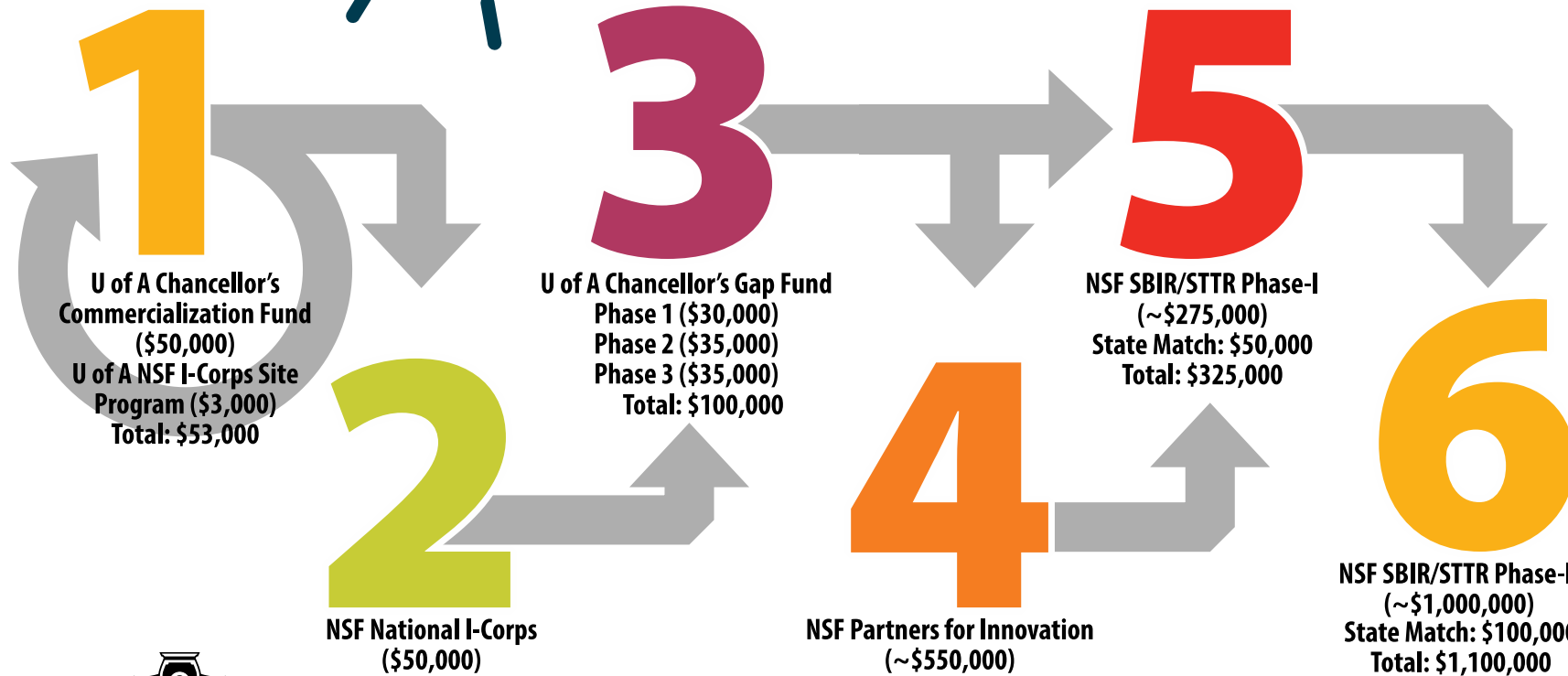


University of Arkansas

Start up and spin out
commercialization
funding pipeline

PRODUCT CONCEPT

(Invention disclosure submitted to
Technology Ventures)



UNIVERSITY OF
ARKANSAS

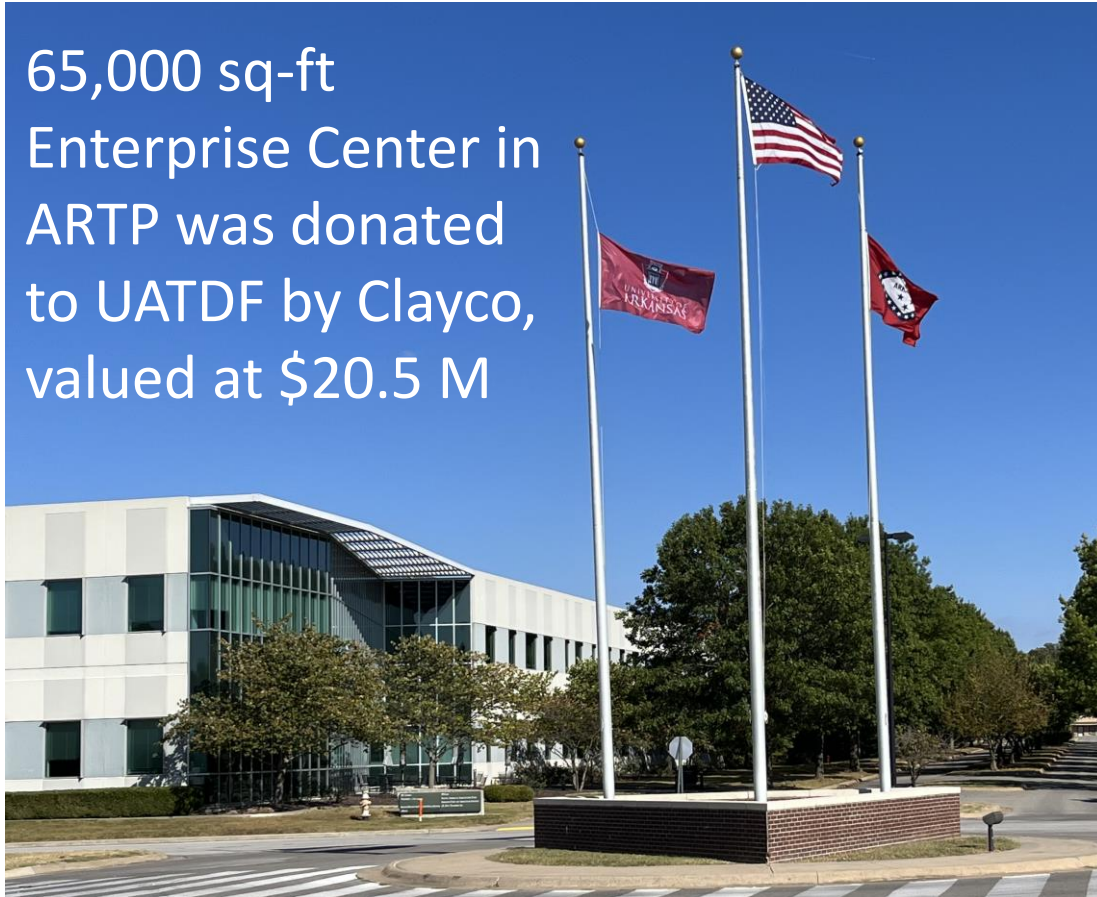
Total funding from idea to commercialization:

~\$2,178,000

Technology Ventures is here to help!

ventures@uark.edu
479-575-3574

65,000 sq-ft
Enterprise Center in
ARTP was donated
to UATDF by Clayco,
valued at \$20.5 M



\$34 M in SBIR and STTR awards over the last 8 years to ARTP Tenants - **over half the awards to the entire state** during that time

the arkansas
research & technology park guiding principles

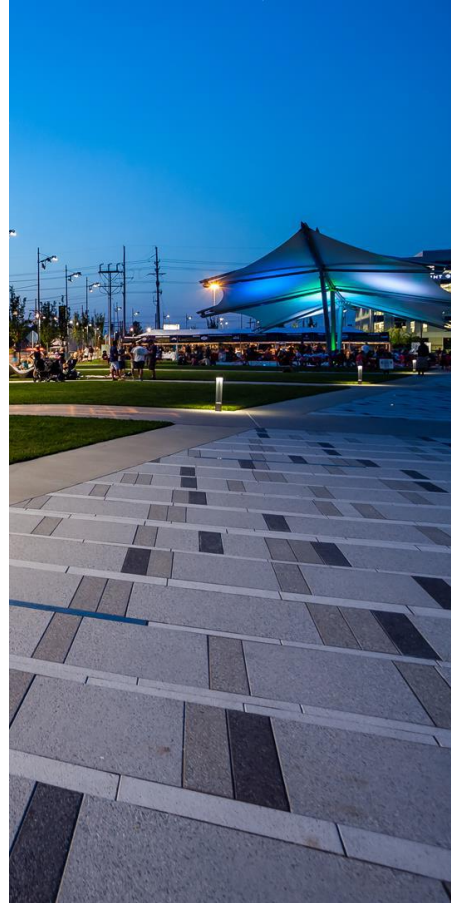
Enable rapid
production
development cycle



Create a mixed-
use, live, work,
play environment



Leverage the trend
of firms following
talent



Facilitate co-
development



Prioritize Quality of
Life





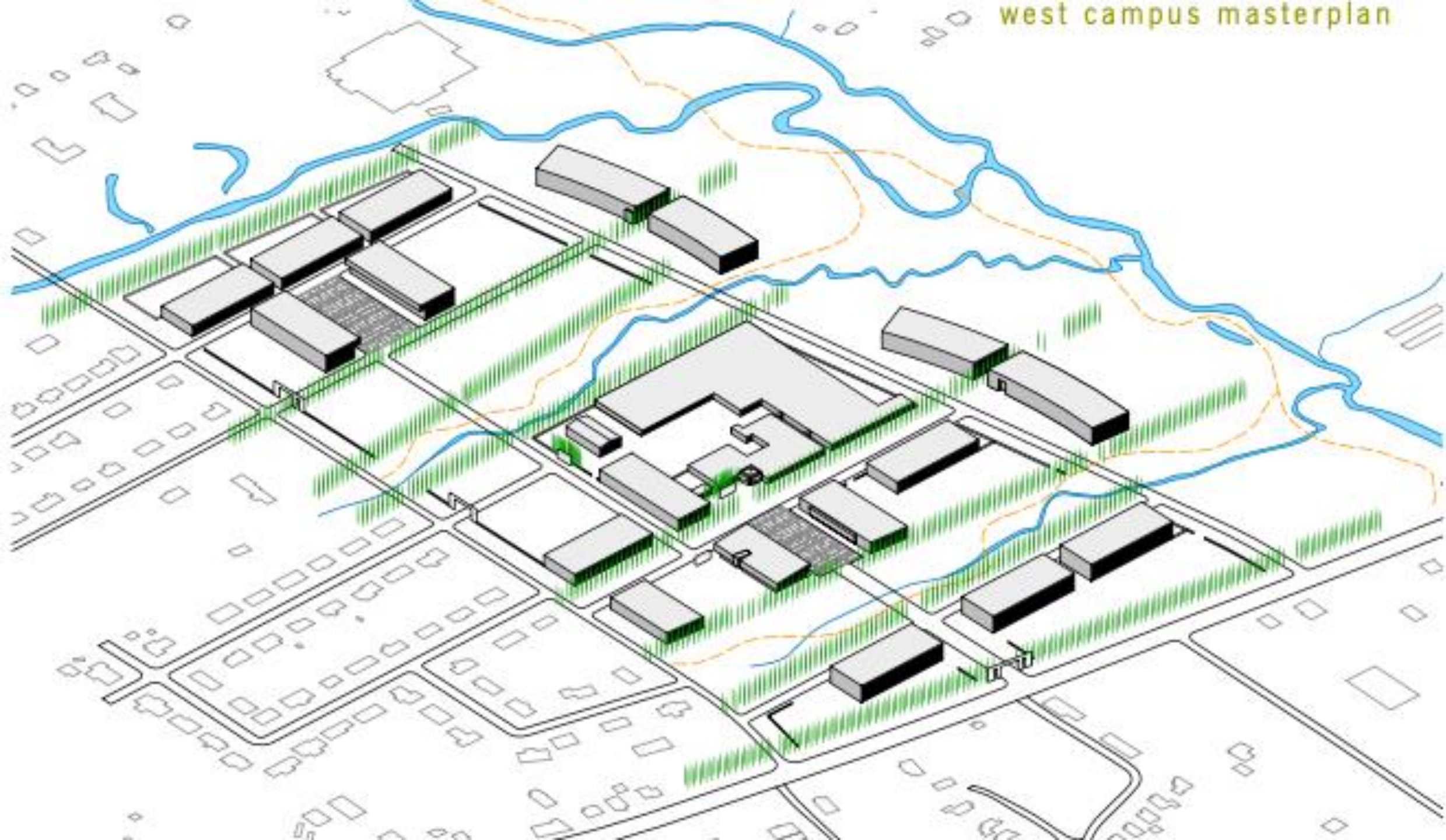
the arkansas
research & technology park





the arkansas research & technology park





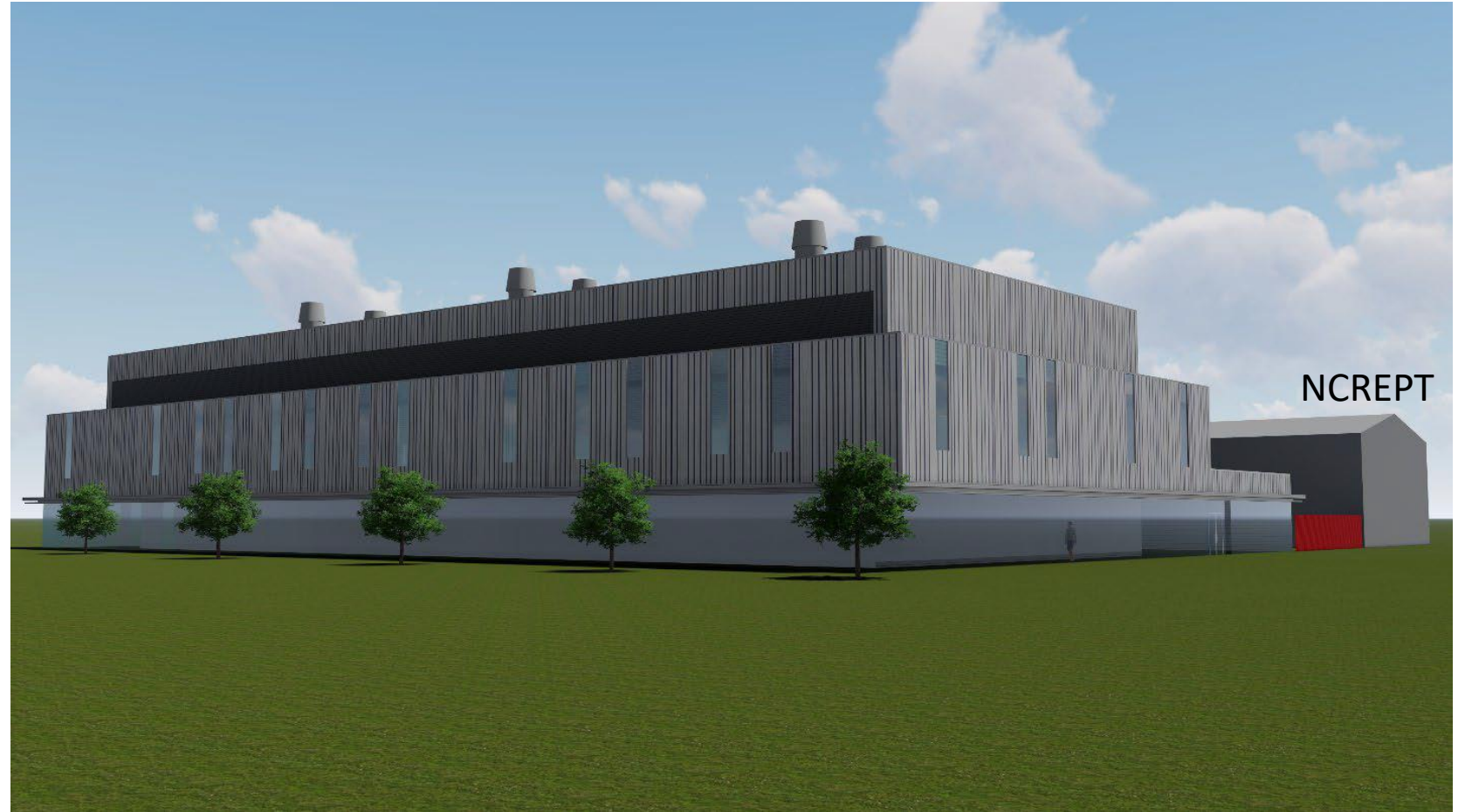
Programming & Community Focus:

- Partner and invest in People & Industry clustering programs to activate space and engage community
- Investment Capital
- Mission aligned business
- Leverage existing industry & community engagement resources
 - Advanced power electronics, SiC electronic chip chemistry and design, and electronic power packaging
 - Data science, multi-modal mobility and Medical technologies

An Organically Grown Tech Hub

- High-Density Electronics Center (HiDEC)
 - a unique facility for creating integrated and packaged power modules that form the basis of power electronics components and the equipment for mechanical vibration testing and analysis
- Genesis incubator – offering office and laboratory space to startup companies
- UATDF – Innovation ecosystem and place making
- National Center for Reliable Electric Power Transmission (NCREPT), which houses grid-scale, regenerative power electronic drives, circuit breakers, transformers and other equipment
- Over 30 tenants scaling to 450 employees in 12 months at capacity

MUSIC Research and Fabrication Facility



National Multi- User Silicon Carbide Semiconductor Research and Fabrication Facility **MUSiC**



Organizations interested in collaboration and use of the SiC Research Fab (universities-red, companies-blue, funding agencies- green).

The Opportunity: Driving Innovation to Impact



Integrating entrepreneurship, innovation and commercialization education and programming into curriculum and experiential learning practice across campus and community



Injecting the UA's knowledge economy into the Arkansas Innovation Ecosystem



Leveraging the UATDF structural toolbox to partner with our community in growing Innovation Districts into attractive, thriving communities

What We've Learned

- A successful Tech Hub is an Innovation District featuring accessible facilities with proper security and access to entrepreneurial and venture support.
- The foundation of a successful innovation hub is a collaboration between academia (university), non-profit (foundation), industry (local startups and large-scale partners), state and Federal support and entrepreneurial support organizations.



Innovation Corridors

“An economy increasingly oriented toward open innovation is changing both where firms locate and how buildings and larger districts—from research labs to collaborative spaces to mixed-use developments—are designed.”-Katz 2014